



# A Members Guide to the Medical Technology Group

---

[www.mtg.org.uk](http://www.mtg.org.uk)

## Contents

---

### **MTG Members .....3**

*A list of all our members and an overview of the role they play in the health and care landscape*

### **MTG Reports .....8**

*A summary of all the reports and studies produced by the MTG over the last three years*

### **The Management Committee .....11**

*An insight into the members of the MTG's management committee*

### **NHS organisations .....15**

*An overview into key NHS organisations and wider bodies*

### **NHS Acronyms .....16**

*A glossary of the many acronyms used within health and social care*

### **The NHS Map .....18**

*A helpful tool to help understand the complex structure of the NHS*



## The MTG Membership

The MTG is a coalition of patient groups, research charities and medical device manufacturers working to improve access to cost effective medical technologies for everyone who needs them. The common purpose of the MTG is to increase patient access to the best diagnostic, imaging, surgical and supported-living technologies on the NHS and our membership ranges from national charities to international companies.

### ABHI:

ABHI is the UK's leading industry association for health technology. ABHI supports the HealthTech community to save and enhance lives. Members include both multinationals and small and medium sized enterprises (SMEs). Interests: medical devices, diagnostics, digital health

### Action Duchenne:

Action Duchenne is a national charity dedicated to supporting those living with Duchenne, a genetic disorder which causes muscle degeneration and weakness. The charity undertakes research, supports educational programmes and carries out engagement campaigns. Interests: Duchenne muscular dystrophy

### Advamed:

The Advanced Medical Technology Association (AdvaMed) is a trade association for medical technology based in the United States. The Association acts as the common voice for companies producing medical devices, diagnostic products and digital health technologies, with a presence Europe, China, India, Brazil and Japan. Interests: ethical standards, product approvals, reimbursement, access to international markets

### Anticoagulation UK:

Anticoagulation UK is a charity dedicated to the prevention of thrombosis (blood clots), raising awareness of the risk of blood clots and how to help prevent them by providing information, education and support for patients and healthcare professionals. Interests: thrombosis, prevention

### ARMA – the Arthritis and Musculoskeletal Alliance:

ARMA is the alliance providing a collective voice for the arthritis and musculoskeletal community in the UK, working in partnership with its member organisations to improve standards of care for people with arthritis and other musculoskeletal disorders. Interests: musculoskeletal disorders

### Arrhythmia Alliance:

Arrhythmia Alliance is a coalition of charities, patient groups, patients, carers, medical groups and allied professionals which works to improve the diagnosis, treatment and quality of life for all those affected by cardiac arrhythmias. Interests: heart disease, arrhythmias

### BD:

BD is a global medical technology company that is *advancing the world of health* by improving medical discovery, diagnostics and the delivery of care. BD leads in patient and health care worker safety and the technologies that enable medical research and clinical laboratories. The company provides innovative solutions that help advance medical research and genomics, enhance the diagnosis of infectious disease and cancer, improve medication management, promote infection prevention, equip surgical and interventional procedures and support the management of diabetes.

### Boston Scientific:

Boston Scientific is a global medical technology company dedicated to transforming lives through innovative medical solutions that improve the health of patients around the world. Interests: heart disease, interventional radiology, pain medicine, neurological surgery, female pelvic medicine, urology, vascular surgery

### **British Cardiac Patients Association:**

The British Cardiac Patients Association is a non-profit organisation run by volunteers, established to provide support to cardiac patients and their carers. It provides support to patients, carers and their families affected by a range of heart conditions. Interests: heart disease

### **Cardiomyopathy UK:**

Cardiomyopathy UK is a specialist charity for people affected by cardiomyopathy in the UK. They provide support and information services, work to raise awareness of the condition, campaign for better access to quality treatment and promote research. Interests: cardiomyopathy

### **Coloplast:**

Coloplast develops products and services to make life easier for people with deeply personal and private medical conditions, often associated with trauma and taboo. Interests: stoma, bladder and bowel care, wound care, urology

### **Cook Medical:**

Cook Medical is a family owned medical device company which invents, manufactures, and delivers a large portfolio of medical devices to healthcare systems around the world. Interests: anaesthesia, general surgery, paediatrics, radiology

### **Diabetes UK:**

Diabetes UK is the leading charity for people living with Diabetes in the UK. The charity works to prevent type 2 diabetes, campaign for and support everyone affected by diabetes, and fund research for a cure. Interests: diabetes

### **Different Strokes:**

Different Strokes is a UK stroke charity providing a unique service to younger stroke survivors and information about stroke in young people. The charity is run by younger stroke survivors, providing services, support and information around stroke in young people. Interests: stroke

### **Edwards Lifesciences:**

Edwards Lifesciences is the global leader in the science of heart valves and advanced haemodynamic monitoring. Driven by a passion to help patients, the company partners with clinicians to develop innovative technologies in the areas of structural heart disease and critical care monitoring that enable them to save and enhance lives. Interests: heart failure, structural heart disease and patient monitoring

### **Fable (For a better life with epilepsy):**

Fable is a charity established in 1995 to support patient access to innovative therapies to manage epilepsy. Interests: epilepsy

### **FEmISA:**

Fibroid Embolisation: Information, Support, Advice is a UK based, voluntary organisation supporting women with fibroids and promoting access to a treatment known as embolization. Interests: women's health, fibroids

### **Fight for Sight:**

Fight for Sight is the UK's largest charity funding pioneering eye research, working to create a world without sight loss. They work to fund research, provide a voice for people affected by sight loss and provide information and support. Interests: eye diseases

### **Group B Strep Support:**

Group B Strep Support is a UK charity working to stop group B Strep infection, including meningitis, in babies. They educate the public, doctors and midwives about group B Strep and provide information and support to affected families. Interests: group b strep

### **Heart Research UK:**

Heart Research UK invests in life-saving medical research into the prevention, treatment and cure of heart disease, as well as supporting ground-breaking training and education. To date, the charity has invested over £25m into research all across the UK. Interests: heart disease



### Heart Valve Voice:

Heart Valve Voice is the UK's dedicated heart valve disease charity, working with patients and clinicians to help increase the awareness of heart valve disease in the UK and improve diagnosis and treatment. Interests: heart disease

### INSIGHTEC:

INSIGHTEC is a global medical technology company transforming patient lives through incisionless surgery using focused ultrasound guided by MRI (MRgFUS). Interests: neurosurgery, women's health, oncology, urology

### International Alliance of Patients' Organizations (IAPO):

IAPO is a unique global alliance representing patients of all nations across all disease areas, working to promote patient centred healthcare around the world. Interests: patient centred care, patient safety

### Intuitive Surgical:

Intuitive is a medical technology company delivering minimally invasive, robotic-assisted platforms and services with the goal of helping doctors and hospitals deliver the best outcomes possible to those in their care. Interests: minimally invasive treatment

### Johnson & Johnson:

Johnson & Johnson is a global pharmaceutical, medical device and consumer health products company, working across a range of clinical areas. Interests: consumer health, orthopaedics, surgery, interventional

### JDRF:

JDRF is the type 1 diabetes charity and a funder of medical research to cure, prevent and treat type 1 diabetes. JDRF's work includes improving access to treatments and technologies for people with type 1 diabetes throughout the UK. Interests: diabetes

### Kidney Care UK:

Kidney Care UK is the UK's leading kidney patient support charity, providing practical, financial and emotional support for kidney patients and their families and campaigning to improve care services across the UK. Interests: kidney health

### Lindsay Leg Club Foundation:

The Lindsay Leg Club Foundation is a community partnership between nursing teams and the local community which empower patients with lower limb conditions to take control of their own treatment, with an emphasis on social interaction, participation, empathy and peer support. Interests: lower limb conditions

### Macmillan Cancer Support:

Macmillan Cancer Support is a charity consisting of supporters, professionals, volunteers and campaigners providing care and support to people diagnosed with cancer. Interests: cancer care

### Medtronic:

Medtronic is a global medical device company using biomedical engineering in the research, design, manufacture, and sale of instruments or appliances that alleviate pain, restore health, and extend life. Interests: minimally invasive therapies, diabetes, cardiac disease, restorative therapies, vascular disease

### National Rheumatoid Arthritis Society: NRAS

NRAS aims to provide information and support for people with rheumatoid arthritis (RA) and juvenile idiopathic arthritis (JIA), their families, friends and carers, as well as health professionals with an interest in RA. Interest: Rheumatoid arthritis

### Nevro:

Nevro is a global medical device company focused on providing innovative products that improve the quality of life of patients suffering from debilitating chronic pain. Interests: chronic pain

### **Obesity Empowerment Network (OEN):**

OEN UK was established in 2015 with a vision for improving the health and lives of people affected by obesity. Interests: obesity

### **Olympus Medical Systems:**

Olympus develop and design clinically-advanced precision technologies and services, which enable healthcare professionals with a broad range of specialities to 'peer' inside the body, using endoscopic procedures. Interests: diagnostics, cancer, minimally invasive treatment

### **Parkinson's UK:**

Parkinson's UK is a charity that drives better care, treatments and quality of life for people with Parkinson's, providing support and accelerating breakthroughs in research. Interests: Parkinson's disease

### **Patient Information Forum:**

The Patient Information Forum (PIF) is the UK membership organisation and network for people working in health information and support. PIF represents more than 300 organisations across the NHS, voluntary, academic, freelance and commercial sectors. Interests: patient support

### **Pelvic Pain Support Network:**

The Pelvic Pain Support Network is a patient led organisation with a board of trustees who are all patients or carers, providing support, information and advocacy for those with pelvic pain and their families and carers. Interests: pelvic pain

### **Pumping Marvellous Foundation:**

The Pumping Marvellous Foundation (PMF) is the UK's patient led Heart Failure charity. The charity aims to goal is to deliver hope to its recipients through the facilitation of better outcomes by cross-working and advocating at a local, regional, national and international level. Interests: heart failure

### **ReCor Medical:**

ReCor Medical is a medical device company that designs and manufactures the Paradise System, a proprietary ultrasound ablation system for renal denervation (RDN). Interests: ultrasound, renal care, hypertension

### **SADS UK:**

SADS UK aims to save lives, providing information, funding research and medical equipment to prevent premature sudden cardiac death. SADS UK is one of the founder members of SADS International, a worldwide network of SADS Organisations. The SADS Organisations are led by people who have been affected personally by SADS, or work closely with those who have. Interests: Sudden arrhythmic death

### **Smiths Medical:**

Smiths Medical is a leading global manufacturer of specialty medical devices that provides innovative and lifesaving solutions for the world's healthcare markets. Interests: critical care, cardiology, emergency medicine, general anesthesia, homecare, pain management

### **STARS:**

STARS (Syncope Trust And Reflex anoxic Seizures) is an international charitable organisation offering information and support to anyone affected by unexplained loss of consciousness, blackouts, transient loss of consciousness, and syncope. In 2005, STARS became affiliated to Arrhythmia Alliance, The Heart Rhythm Charity, and works closely with it. Interests: arrhythmia, heart disease

### **Stryker:**

Stryker is one of the world's leading medical technology companies working to make healthcare better and improve patient and hospital outcomes. Interests: orthopaedics, medical and surgical, neurotechnology

### **The Circulation Foundation:**

The Circulation Foundation is the only UK Vascular charity, dedicated to vascular health. The charity aims to promote awareness and support research into vascular conditions. Interests: vascular disease

### **The Dystonia Society:**

The Dystonia Society is a charity which provides support, information and advocacy for anyone affected by the neurological movement disorder known as dystonia. Interests: dystonia

### **The Patients Association:**

The Patients Association is one of the oldest and most distinctive health and care charities in the UK, covering all issues that affect patients including social care and public health. Working directly with patients, they engage with Government, the NHS and others to provide a platform for patients priorities and concerns, ensuring the patient voice is heard and acted upon. Interests: patient centred care

### **The Somerville Foundation:**

The Somerville Foundation is the only UK charity dedicated to supporting adults born with a heart condition (ACHD). The charity exists to create a world where patients receive excellent medical care, and lead happy, healthy lives. Interests: heart disease

### **Royal Osteoporosis Society (ROS):**

The ROS is the only UK-wide organisation dedicated to finding a cure for osteoporosis and improving the lives of everyone affected by it. Interests: osteoporosis

### **Versus Arthritis:**

Versus Arthritis was formed in 2018 following a merger of Arthritis Care and Arthritis Research UK. The charity works to develop breakthrough treatments and campaigns to reduce the pain, fatigue and isolation caused by arthritis. Interests: arthritis

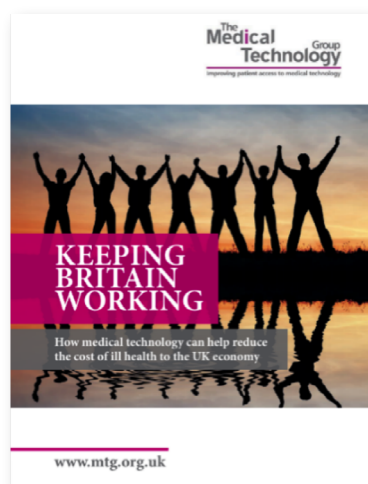
### **Zimmer Biomet:**

Zimmer Biomet is a medical device company providing innovations which help treat patients suffering from disorders of, or injuries to, bones, joints or supporting soft tissues. Interests: orthopaedics, musculoskeletal conditions



## MTG Reports

### Studies and Campaigns



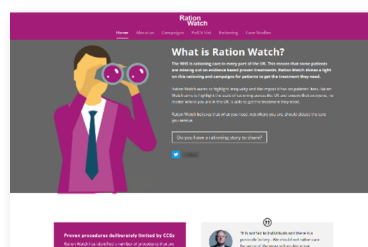
#### **Keeping Britain Working – How medical technology can help reduce the cost of ill health to the UK economy**

In November 2017, the MTG published the report 'Keeping Britain Working' in follow up to The Work Foundation's 2011 publication on the wider societal benefits of patient access to medical technology.

'Keeping Britain Working' describes the findings of an MTG study which looks at different therapeutic areas and the savings that are currently being generated or could be available through improved patient access to different technologies.

The study calculated that the better or continued use of eight technologies could save the NHS and UK taxpayer up to £476.5 million.

The report can be accessed [here](#).



#### **Ration Watch**

In 2018, the MTG launched the online resource Ration Watch. This exciting new tool highlights how despite clear guidance from NICE and NHS England, CCGs are increasingly restricting patient access to treatments that had been widely used previously.

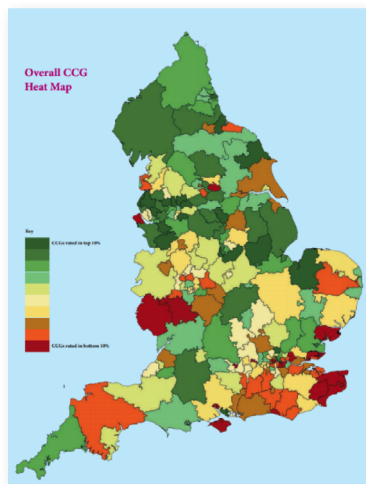
Ration Watch highlights the impact of rationing and the damage it does to patients and the NHS. It focuses on four key technology based treatments: hernia operations, continuous glucose monitoring, hip and knee replacements and cataract operations.

Through raising awareness the MTG has works to drive NHS leaders to do more to ensure that patients do not face a postcode lottery in accessing lifesaving and enhancing medical technology.

Visit the Ration Watch website [here](#).



## Spotlight Reports



### The North-South NHS divide: how where you are – not what you need – dictates your care

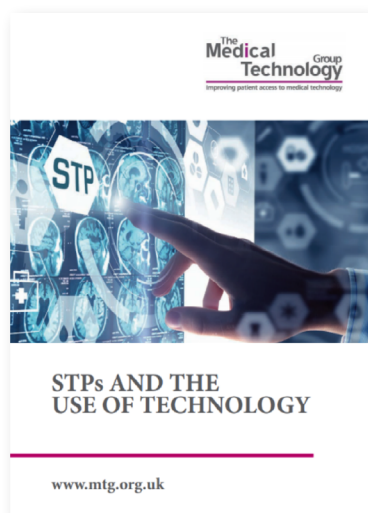
In 2017, the MTG examined data from CCGs across England to find out how effective they are in giving patients access to medical technology.

The Medical Technology Group (MTG) examined data from all 209 Clinical Commissioning Groups (CCGs) from across England to find out how effective they are at giving patients access to medical technology.

The report: 'North-South NHS divide' highlighted that in different parts of England, the patient experience varied hugely.

Alongside a series of recommendations, the MTG published a heat map ranking CCGs accordingly to how good they are at ensuring their local population is able to access medical technology when required.

The report can be accessed [here](#).



### STPs and the Use of Technology

In 2018, the MTG published a report on Sustainability and Transformation Partnerships (STPs) and Integrated Care Systems (ICSs) and the plans these organisations had published to clarify strategic objectives for their region.

The report found that STPs and ICSs could help address the systematic problems that have led to the NHS being a late and slow adopter of technology.

However, analysis of the initial plans published by STPs showed that only 4 out of a possible 44 had any reference to the need to utilise innovative technology.

The report called for NHS England as well as STP and ICS leaders to take the lead in supporting the adoption of medical technology for the benefit of patients.

The report can be accessed [here](#).



## Our NHS: a Spotlight on the Innovation Landscape

In January 2020 the MTG launched a study which assessed the current mechanisms for innovation and technology and whether they foster an environment that delivers timely treatments to patients and takes advantage of medical technology on offer.

The report included an evaluation of key innovation organisations, based on factors such as how they perform, interact and operate with one another.

The publication made a series of recommendations for decision makers to facilitate the more effective uptake of medical technology for the benefits of patients. Early access to medical technology, a more joined up system and an appropriate funding mandate were just some of the recommendations made.

The report can be accessed [here](#).



## Access Accelerator Report

In March 2021, the MTG published the Access Accelerator report focussing on how the UK can alter the current health system to allow for the systematic uptake of innovative medical technology for the benefit of patients.

The report looks into 11 core elements, with key elements of the new system including clarity on the level of data required for interaction with the pathway, a clear role for patients and a single front door for innovators.

The Access Accelerator would simplify the current system and stage organisations so they act as a single pathways pushing to an end point of technology adoption.

The report can be accessed [here](#).

## The Management Committee

The MTG's management committee provide the vital oversight and direction of the organisation. The committee is made up of industry and patient group representatives who provide insight to help steer the group into a position of influence. Please find a list of the members.

### **Ameer Ally,**

*Head of Market Access and  
Government UKI, Edwards  
Lifesciences*

Ameer is an industrial pharmacist and lawyer by training with over 38 years' experience in the healthcare technologies industry, covering both pharma and medtech products in a variety of roles. He started work in a small pharmaceutical company in the technical department, then went into regulatory affairs in pharma and then later devices, then to government affairs and reimbursement, health economics and market access. Ameer has managed groups in the EMEA, Eastern Europe, Japan and USA in both pharma and devices.

Before joining Edwards in 2017 he worked for Medtronic, Covidien, ConvaTec (a Bristol-Myers Squibb Company), Allergan, American Cyanamid and Potters.

Ameer has many years of experience working in trade associations, in particular ABHI and MedTech Forum committees where he chaired a number of these groups. He was also the chair of the SDMA (Woundcare), successfully bringing the member companies through the NHS Supply Chain Excellence Programme. He is currently Chair of the ABHI Heart Valve Disease Group.

### **Wil Woan,**

*CEO, Heart Valve Voice*

Wil has worked in the voluntary sector for 20 years, with the last 5 years spent as CEO of Heart Valve Voice, the UK's dedicated Heart Valve Disease Patient Organisation. During this time, Wil has launched several Parliamentary Reports into valve disease treatment in the UK, and has recently set up a Heart Valve Disease All Party Parliamentary Group.

Throughout his work at Heart Valve Voice, Wil has championed innovation as means of improving the detection and treatment of heart valve disease, and was chosen to be the UK TAVI Trial patient representative. Wil has worked with leading clinicians and policy makers to produce guidelines and standards of care which provide a framework for the future care of valve disease patients.

Wil now sits as Chair of Global Heart Hub's Heart Valve Disease Patient Council, where he founded the Heart Valve Disease Awareness Week initiative - a now global initiative with over 18 countries around the world participating and reaching over 30 million people affected by heart valve disease.

### **Liz Perraudin,**

*Senior Policy Officer,  
Diabetes UK*

Liz has extensive professional experience in both health policy and public affairs. She currently leads Diabetes UK's policy work around medical technology and digital health, working closely with health-sector partners to ensure people living with diabetes have access to the technologies they can most benefit from.

Liz knows that technology can help tackle some of our biggest health challenges, not least diabetes, but wants to ensure patients are at the heart of this. She believes MedTech can transform the lives of people living with long-term health conditions but wants patient voice to be at the centre of this technological transformation in health. As someone living with type 1 diabetes she brings both professional and personal experience to the MTG Management Committee.

**David Dawson,**  
*Market Access Director,  
Becton Dickinson (Treasurer)*

David has worked in the healthcare sector for over 30 years having initially trained as a registered nurse before joining the medical device sector. He worked in both sales and marketing positions, both in the UK and Europe covering numerous disease states including renal, urology, orthopaedics, diagnostics, vascular, oncology, GI surgery and infection prevention.

This diverse background has been across both the hospital and community settings which provide a broad and varied insight into the important variations between the two regarding patient/consumer and clinician needs. He brings this crucial quality to the MTG and continues to use this experience to gain patient's continued access to the most effective technologies that will benefit them and the wider health service.

He is currently leading the Market Access Team for Becton Dickinson's Interventional segment in the UK and Ireland.

**Keith Jackson,**  
*Chairman, The British  
Cardiac Patients Association*

Keith is Chairman of The British Cardiac Patients Association, which was formed in 1982 to give support, reassurance and advice to cardiac patients and their carers.

This is carried out through area groups, national helpline and a bi-monthly Journal. Visiting patients in hospital is an important part of this support. The BCPA is a founder member of the Medical Technology Group. Having been Association Chairman for over twenty years and a member of the MTG Committee for a number of these, he is a valued member of the committee supporter the aims of the group.

**Jonathan Evans,**  
*Associate Director,  
Communications, ABHI*

Jonathan is responsible for setting and implementing ABHI's communications strategy. As the public face of ABHI, it is critical that the communications function effectively relays the Association's key priorities to members, the NHS, government and wider stakeholders, both nationally and internationally.

A member of MedTech Europe's Communications Committee, Jonathan is also part of the Medical Technology Group's management committee.

A graduate of Cardiff University's School of Journalism, in his previous role Jonathan led the communications department of Ataxia UK, the national charity for people affected by the neurological condition, ataxia. Prior to this, Jonathan worked in PR, specialising in food and drink, an area he developed a passion for after joining Majestic Wine's graduate scheme.

Jonathan was part of the BBC's 2010 'Blast' cohort, a national training scheme for budding communications professionals coordinated by the BBC.

**Michael Green,**  
*Vice President, Zimmer  
Biomet Northern Europe*

Michael has been the Vice President for Zimmer Biomet Northern Europe since 2019 and has over 30 years' experience in the health sector. Michael's previous roles include Managing Director for Medacta UK, General Manager (Implants) for Stryker in the UK/Ireland, Chief Executive of Trust Health and VP Marketing EMEA for Wright Medical. He has carried out extensive work in the orthopaedics industry and also worked as a management consultant in specialist medical devices for five years.

Michael has an honours degree in Business Studies and a Masters in Technology and Innovation, and is a Companion Fellow of the British Orthopaedic Association. He served as a member of the National Joint Registry (NJR) Steering Committee and Editorial Board between 2014 and 2018. He is a Patient Insight Partner and USER Panel Member for Versus Arthritis.



**Ros Meek,**

*Government Affairs Manager,  
Medtronic*

Ros' background as a nurse and a health visitor gained her valuable first-hand experience of the NHS which she continually draws on in order to understand the impact of disease and illness on patients and their families. This was complemented by four years as director of an alliance of arthritis charities, ARMA.

Working in both the pharmaceutical and medical technology industries has given her the understanding of the hurdles that companies face in developing and implementing new technologies. Access to these new technologies remain a lottery even when the massive hurdle of NICE approval has been overcome.

She believes that the MTG can help bring together the views of patients, researchers and industry to lobby for better access and an end to the inequity that we face in the English NHS. As the health industry continues its journey towards the post Brexit era, it is likely that these issues will be under the spotlight as we move away from the rest of Europe. As such, she argues that the combined forces speaking with one voice will be an invaluable lobbying tool as we forge our way in the future.

**Sandra Lawrence,**

*Public Affairs & Commercial  
Director, Stryker UK*

Sandra has worked in the medical device industry for over 30 years in various roles including operations, sales and marketing in various Clinical areas. For the last 19 years she has worked for Stryker UK and in the last 10 years, she has led the Government Affairs function for the UK & Ireland. She inputs into the commercial and market access functions across all of Stryker's business interests and is a member of the UK Leadership Team, having built strong personal relationships with a large number of stakeholders across the procurement, clinical and policy network.

Sandra is also currently an ABHI Board Director and has represented the industry in meetings with Government Ministers/Officials, Senior NHS Leaders and other key stakeholders. She is an active member of several ABHI policy and sector specific groups and is currently Chair of the Orthopaedic Group and Vice Chair of the Robotic Surgery Group. She represents the orthopaedic industry on the National Joint Registry (NHSE position), Beyond Compliance Steering Group and Orthopaedic Alliance Group.

**Barbara Harpham,**

*Head of the Heart Academy,  
Heart Research UK (Chair)*

Barbara was National Director and CEO of Heart Research UK, the only charity dedicated to your heart, from 2003 to 2019. Formerly The National Heart Research Fund, HRUK funds millions of pounds of pioneering research, at the cutting edge of science into the prevention, treatment and cure of heart disease in hospitals and universities across the UK. Now, Barbara is the Head of the HRUK's Heart Academy, a unique education and learning hub for schools, clinicians and patients.

Previously, Barbara worked for one of Europe's largest voluntary organisations at local, regional and, then, national level. She has been a local Councillor and Group Leader; Parliamentary candidate and National Chairman of her professional's national body so has a keen interest in current affairs and now, especially, because of HRUK's investment in medical devices in the cardiovascular speciality, in medical technologies.

This interest led Barbara to take a more prominent role in encouraging the take-up of medical technologies, as Chairman of the Medical Technology Group, a position she has held for 12 years. She feels that the experiences, and lessons learned, during the COVID 19 pandemic have opened not just patients' eyes, but shown the NHS and government at all levels, the power of medical technology to get people back to work and looking after their loved ones quicker, and increasing quality of life patients. Never has there been a more opportune time for a strong voice to increase the uptake of medical technology in the NHS and, as MTG Chairman, Barbara leads a group that will be that strong voice.

**Ginette Camps-Walsh,**  
*Coordinator, FEmISA*

Ginette's career started in R&D developing diagnostic tests. She then moved into sales in pharmaceuticals and then marketing of specialist pharmaceuticals and medical devices, including interventional radiology and cardiology products. She progressed to running the UK subsidiaries of some specialist medical companies.

She started suffering from very painful and heavy periods and was diagnosed with several very large fibroids. Hysterectomy was suggested, but she was concerned about the safety, complications and long-term effects. She asked if embolisation, an interventional radiology procedure, could be used to treat her and was lucky that her GP knew about this. She had uterine artery (fibroid) embolisation UFE which worked very well for her and she has never looked back.

She started FEmISA with other women who had been successfully treated with UFE to help and support others with fibroids and ensure that they had a choice of treatments, not pushed into hysterectomy. She has been on the management committee of MTG for a few years and very much values MTG's campaigns for better access to beneficial innovative, less invasive treatments such as UFE, including better patient information and choice. UFE featured in a previous spotlight campaign.

**Joe Gatewood,**  
*Vice-President, Advamed*

Mr. Gatewood (Joe) is an attorney with over 30 years of experience in health policy. He currently serves as a Vice President in Advamed's Global Department. He has held prior positions in private law practice and within the US Department of Health and Human Services (HHS). At HHS he worked on behalf of the Office of the Secretary to address program litigation issues and also conducted investigations into health care quality and payment issues as a Senior Counsel for the HHS Office of Inspector General.

Joe initially came to Advamed as a member of its (US) Payment Department. During his time there, Joe led Advamed's efforts on hospital inpatient reimbursement, DRG reform, competitive bidding, and issues affecting the wound care and orthopedic sectors.

In his current role, Joe oversees Advamed's policy work on EU and UK issues, and leads on policy engagement on Korea and Global Reimbursement and Procurement. Joe manages Advamed's engagement in patient and industry advocacy in the UK and Germany. He has been pleased to have served in a leadership capacity within the MTG for more than 12 years and to have played an instrumental role in MTG's engagement and advocacy efforts.

**Kieran Murphy,**  
*Director, Market Access, ReCor Medical (Vice-Chair)*

With a professional background spanning two large multinationals, a medium-sized growth company and an innovative 'start-up', Kieran has a career spanning 15 years in medical devices, 10 of those at senior leadership levels. In addition to extensive experience in the UK, Kieran has worked across Europe, Asia and United States and currently has global responsibility for Market Access at ReCor Medical, headquartered in Palo Alto California.

Kieran's experience is strongly focussed on Government Affairs & Market Access, building on an academic background in public health & health technology assessment (HTA) in the public sector. Kieran takes an active role in global trade associations including MedTech Europe and Advamed in the US alongside chairing the Market Access Policy Group for the ABHI since it was constituted several years ago. For the past 6 years Kieran has represented the medical device industry on the UK Interventional Procedures Advisory Committee (IPAC) at NICE which is responsible for assessment of procedures and devices at an early stage for safety and efficacy.

Kieran has made a significant contribution to the work of the Medical Technology Group over the past 10 years through his role on the Management Committee. Kieran has previously served as Treasurer and currently serves as Vice-chairman of the Group.

## NHS Organisations

### NHS England and NHS Improvement

NHS England and NHS Improvement leads the National Health Service (NHS) in England. Originally separate bodies, the two organisations have joined to create a single entity to better support the delivery of the NHS Long Term Plan.

Local health systems are supported by seven integrated regional teams who play a major leadership role in the geographies they manage. They make decisions about how best to support and assure performance in their region, as well as supporting system transformation and the development of sustainability and transformation partnerships and integrated care systems (ICS).

### NHS Digital

NHS Digital is the national information and technology partner to the health and social care system. The organisation is made up of a team of experts whose job it is to design, deliver and manage technology infrastructure, data and digital services, products and standards that health and care professionals use every day to deliver better care.

NHS Digital has a unique statutory duty to help the health and care system drive greater value from the data and information it generates. The data and information NHS Digital publishes is used by commissioners to improve services, and by researchers to find new ways to prevent and treat disease.

### Public Health England

Public Health England is an executive agency of the Department of Health and Social Care. It provides government, local government, the NHS, Parliament, industry and the public with evidence-based professional, scientific expertise and support.

Public Health England was originally established on 1 April 2013 to bring together public health specialists from more than 70 organisations into a single public health service.

In August 2020, it was announced that Public Health England would be abolished and is to be replaced by the National Institute for Health Protection.

### UK Health Security Agency

The UK Health Security Agency (UKHSA) was formed in 2021 to plan for, prevent and respond to external health threats such as infectious diseases. The agency was previously known as the National Institute for Health Protection. The primary focus of the group is to respond to the covid-19 pandemic, combining elements of Public Health England, the Joint Biosecurity Centre and NHS Test and Trace. The agency will be led by Deputy Chief Medical Officer for England, Dr Jenny Harries and Chaired by Ian Peters.

### National Institute for Health and Care Excellence

The National Institute for Health and Care Excellence (NICE) is an executive non-departmental public body, sponsored by the Department of Health and Social Care. It works to improve outcomes for people using the NHS and other public health and social care services and does this by:

- Producing evidence-based guidance and advice for health, public health and social care practitioners.
- Developing quality standards and performance metrics for those providing and commissioning health, public health and social care services.
- Providing a range of information services for commissioners, practitioners and managers across health and social care.

### NHS Providers

NHS Providers is the membership organisation for the NHS hospital, mental health, community and ambulance services that treat patients and service users in the NHS. It helps NHS trusts and foundation trusts to deliver high-quality care by enabling them to learn from each other, acting as their public voice and helping to shape the system in which they operate.

NHS Providers has all trusts in voluntary membership, collectively accounting for £84bn of annual expenditure and employing more than one million staff.

### The Department of Health and Social Care

The Department of Health and Social Care is a department within the UK Government responsible for government policy on health and adult social care matters in England. It oversees the work of the NHS within England. The department is led by the Secretary of State for Health and Social Care, along with additional Ministers of State and Parliamentary Under-Secretaries of State. The department carries out some of its work through arms-length bodies, such as NHS England and the NHS Digital, and executive agencies such as Public Health England and the Medicines and Healthcare Products Regulatory Agency.

### NHS Confederation

The NHS Confederation is the membership body that brings together and speaks on behalf of organisations that plan, commission and provide NHS services in England, Northern Ireland and Wales. It represents hospitals, community and mental health providers, ambulance trusts, primary care networks, clinical commissioning groups and integrated care systems.

## NHS Acronyms

As we know, the health and care landscape has always been heavily laden with acronyms that can confuse even the most experienced individual. As such, the MTG have endeavoured to create a 'cheat sheet' that provides a description of the many acronyms you might find in the policy documents, consultations, press releases and the wider media.

### NHS and Governance:

<b>CCG</b>	<i>Clinical Commissioning Group</i>
<b>CDF</b>	<i>Cancer Drugs Fund</i>
<b>CPAG</b>	<i>Clinical Priorities Advisory Group</i>
<b>CRG</b>	<i>Clinical Reference Group</i>
<b>CRN</b>	<i>Clinical Research Network</i>
<b>DHSC</b>	<i>Department of Health and Social Care</i>
<b>ICS</b>	<i>Integrated Care Systems</i>
<b>JAG</b>	<i>Joint Advisory Group</i>
<b>NAG</b>	<i>National Advisory Group</i>
<b>NHS</b>	<i>National Health Service</i>
<b>NHSCC</b>	<i>NHS Clinical Commissioners</i>
<b>NHSE</b>	<i>NHS Employer</i>
<b>NHSE/I</b>	<i>NHS England &amp; NHS Improvement</i>
<b>NHSSC</b>	<i>NHS Supply Chain</i>
<b>NPoC</b>	<i>National Programmes of Care</i>
<b>PTP</b>	<i>Procurement Transformation Programme</i>
<b>SCG</b>	<i>Specialised Commissioning Group</i>
<b>STP</b>	<i>Sustainability and Transformation Partnership</i>

### NHS Terminology:

<b>A&amp;E</b>	<i>Accident and Emergency</i>
<b>AHP</b>	<i>Allied Health Professionals</i>
<b>CCIO</b>	<i>Chief Clinical Information Officer</i>
<b>CDF</b>	<i>Cancer Drugs Fund</i>
<b>CMO</b>	<i>Chief Medical Officer</i>
<b>CNO</b>	<i>Chief Nursing Officer</i>
<b>COG</b>	<i>Clinical Oversight Group</i>
<b>DPH</b>	<i>Director of Public Health</i>
<b>EI</b>	<i>Early Intervention</i>
<b>FOI</b>	<i>Freedom of Information</i>
<b>HAP</b>	<i>Hospital Admission Prevention</i>
<b>ICU</b>	<i>Intensive Care Unit</i>
<b>IP&amp;C</b>	<i>Infection Prevention &amp; Control</i>
<b>ISP</b>	<i>Independent Sector Provider</i>
<b>KPI</b>	<i>Key Performance Indicator</i>
<b>LTP</b>	<i>NHS Long Term Plan</i>
<b>MDT</b>	<i>Multi-Disciplinary Team</i>
<b>NCD</b>	<i>National Clinical Director</i>
<b>PCN</b>	<i>Primary Care Network</i>
<b>PLCV</b>	<i>Procedures of Limited Clinical Value</i>
<b>QALY</b>	<i>Quality-adjusted life year</i>
<b>R&amp;D</b>	<i>Research and Development</i>



### Health Bodies:

<b>AAC</b>	<i>Accelerated Access Collaborative</i>
<b>AAR</b>	<i>Accelerated Access Review</i>
<b>AHSNs</b>	<i>Academic Health Science Networks</i>
<b>CQC</b>	<i>Care Quality Commission</i>
<b>GIRFT</b>	<i>Getting It Right First Time</i>
<b>HEE</b>	<i>Health Education England</i>
<b>HS</b>	<i>Heath Survey for England</i>
<b>HWE</b>	<i>Health Watch England</i>
<b>LGA</b>	<i>Local Government Association</i>
<b>MHRA</b>	<i>Medicines and Healthcare Products Regulatory Agency</i>
<b>NAO</b>	<i>National Audit Office</i>
<b>NICE</b>	<i>National Institute of Health and Care Excellence</i>
<b>UKHSA</b>	<i>UK Health Security Agency</i>
<b>NIHR</b>	<i>National Institute of Health Research</i>
<b>PHE</b>	<i>Public Health England</i>

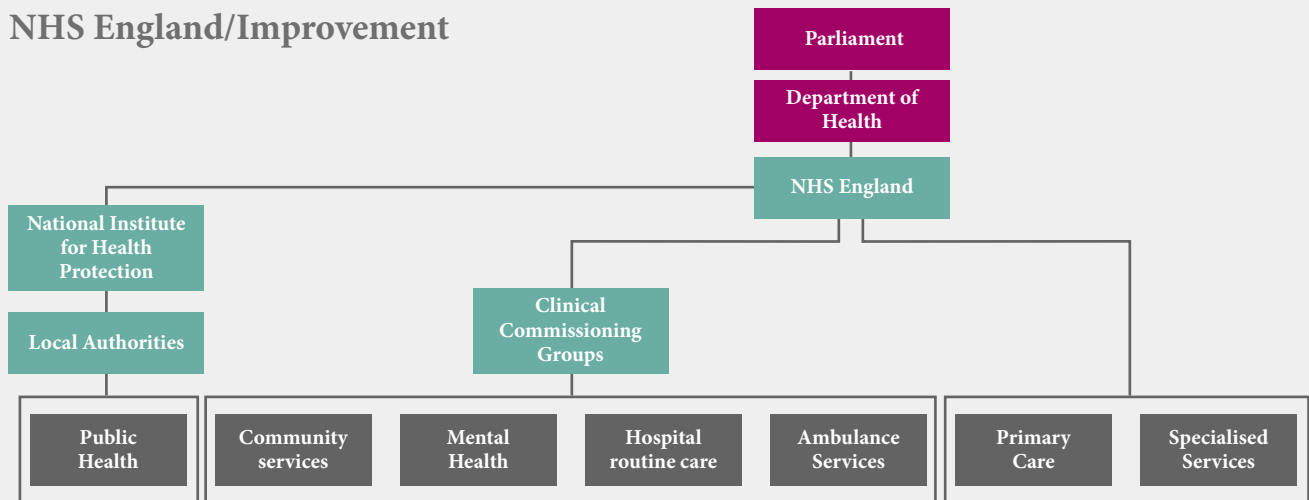
### Wider Stakeholders:

<b>ABHI</b>	<i>Association of British HealthTech Industries</i>
<b>ABPI</b>	<i>Association of the British Pharmaceutical Industry</i>
<b>AfPP</b>	<i>Association for Perioperative Practice</i>
<b>AoMRC</b>	<i>Academy of Royal Medical Colleges</i>
<b>BMA</b>	<i>British Medical Association</i>
<b>GMC</b>	<i>General Medical Council</i>
<b>MRC</b>	<i>Medical Research Council</i>
<b>NAPC</b>	<i>National Association of Primary Care</i>
<b>RCGP</b>	<i>Royal College of General Practitioners</i>
<b>RCN</b>	<i>Royal College of Nursing</i>
<b>RCP</b>	<i>Royal College of Physicians</i>
<b>RCS</b>	<i>Royal College of Surgeons</i>
<b>RSPH</b>	<i>Royal Society for Public Health</i>

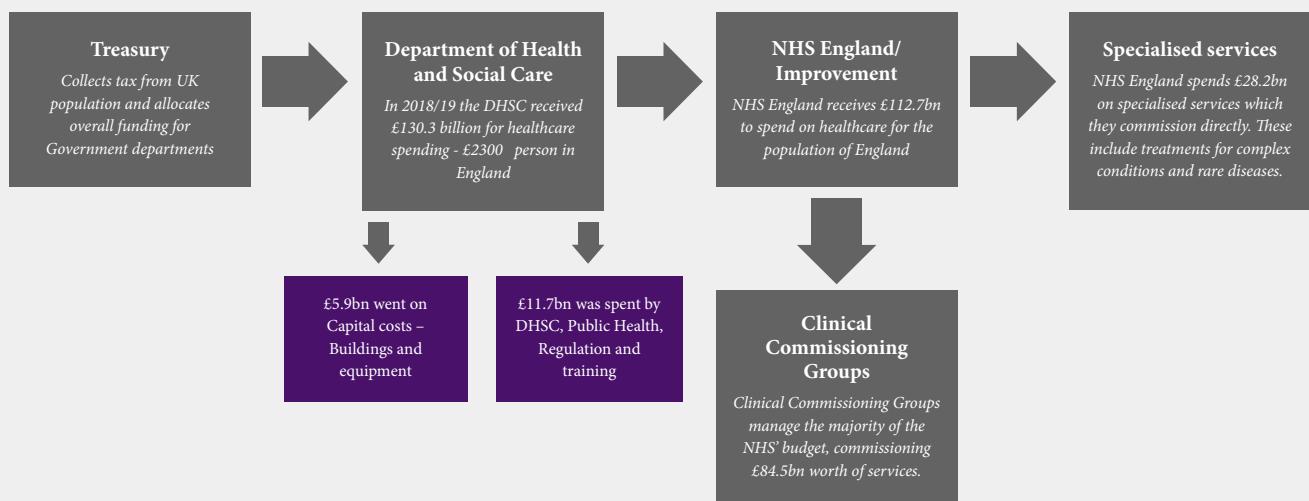


## The NHS Map

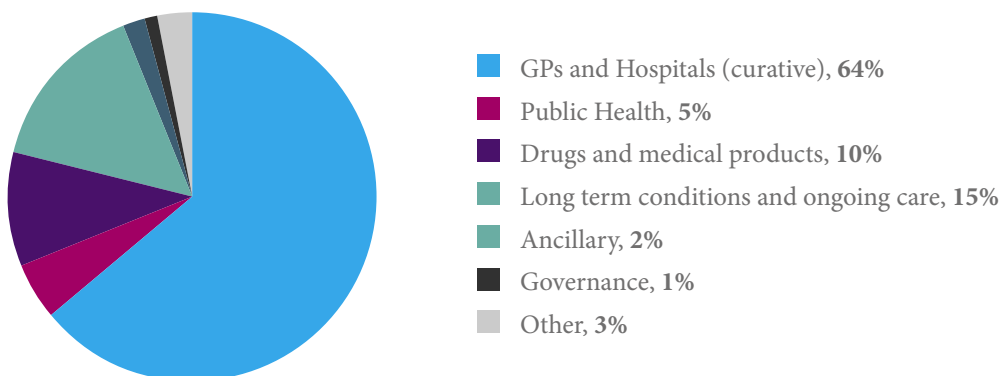
### NHS England/Improvement



### Funding Flow



### Where is it Spent?



# NHS Overview – Detailed

