

INSIDE THIS ISSUE:

- AWARD WINNER** 2
- THE LAUNCH** 3
- CHRISTMAS DINNER** 4

MABLETHORPE AND SUTTON LEG CLUB ONE YEAR ON...

Little did Carol (our lead nurse) know, that an idea she had about starting a leg club locally, would rapidly grow into such a success.

Having researched the concept of the Leg Club ethos she was a woman on a mission! Who could she enlist to help? Where could it be held? How would it be received? How would the money be generated to fund it? Would our Trust support it? **COULD IT BE DONE?**

Well it is one year on now and boy what a year it has been for nurses, volunteers and members!

A new concept it truly is. It has taken the nurses and members a while to adjust but two awards later we can be proud of all that has been achieved.

Carol very cleverly enlisted the help of her family: husband, two daughters and her Dad. They all chipped in to help with the first fundraising event – a coffee morning at the community hall. They have continued to give their support –

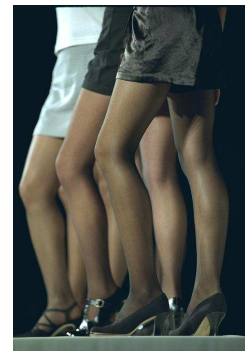
Carol's husband is now the Committee chairman.

The coffee morning raised £300, we were on a roll! More Committee members were enlisted; the venue of the Community Hall was secured and booked for a year.

Other fundraising events followed. A bottle stall was manned at the local Trafalgar Day celebrations. Table space was hired from March to October at the Table Top Sales in the Enterprise Hall at Sutton on Sea. Car Boot Sales were attended during the summer months. All this mainly down to the efforts of volunteers Jan, Ann and Babs.

The Club also received donations from the Corporate Industries which contribute to new Leg Clubs. Other companies which manufacture dressings and Diabetes equipment were also generous in their support. Local businesses and organisations have continued to offer help financially and in kind. Club members often give more than the cost of the refreshments.

The Community Council of



Lincolnshire, through the Fizz Fund, paid for the folding examination couch and Akron stools – specially designed treatment stools which allow the nurses to work in a safe position whilst supporting the client's leg comfortably.

Grateful thanks to all of you.

The Club, now firmly established, is able to offer support for other new clubs. Amongst the visitors we have had during the year have been nurses from Market Harborough, Gossberton, Southport, Holbeach, Skegness and Woodhall Spa. Carol and Claire have delivered presentations to some of these and also to the Primary Care Trust.

Mablethorpe & Sutton on Sea now have a thriving Leg Club with a growing reputation.

SPECIAL POINTS OF INTEREST:

- Pictures of some of the award winners.
- See photos from the launch party.
- Photos from the Christmas lunch.

AWARD WINNERS

In 2006 Mablethorpe & Sutton on Sea Community Nurses Carol Brailsford and Claire Storry won an Award for Innovation at the “Inspiring Success” Award ceremony run by the Trent Strategic Health Authority in Nottingham. This competition is designed to celebrate the achievements of Trent NHS organisations.

Carol and Claire won with the inspirational Mablethorpe & Sutton on Sea Leg Club project which they were instrumental in setting up. Their award was presented

to them by Madi Sharma, herself a creative innovator, a member of the European Economic and Social Committee and the 2001 Asian Woman of Achievement.

These two nurses, together with the District Nursing Sister Tina Winn, also won another award in a competition run by the national professional publication the “British Journal of Nursing”. Once again the Leg Club was involved but this time the Award was for clinical excellence in

Compression Therapy using a case study of a Leg Club member. This time a visit to the Savoy Hotel in London was the order of the day!

Both competitions awarded trophies which are displayed in the Leg Club. However the “Inspiring Success” Award also included prize money of £1000 which was supposed to be halved with the then East Lincolnshire Primary Care Trust. The Acting Chief Executive Tim Rideout agreed to the entire sum going to the Leg Club.

Carol and Claire won with the inspirational Mablethorpe & Sutton on Sea Leg Club project which they were instrumental in setting up



THE LAUNCH

Mablethorpe & Sutton on Sea Leg Club held its official launch on the 21st April 2006. The Club had opened in early December 2005 but it was felt by the Steering Group that the members and those who had contributed to the setting up of the Club deserved some form of acknowledgement.



Eighty replies were received in response to the invitation.



The celebrity, whose task it was to declare the Club open, was none other than Mr Paul Dunning, the Vascular Surgeon – a familiar face to many of the Club members.

The Mayor and Mayoress of Mablethorpe, Councillor and Mrs Peter Jackson were also welcome visitors. Peter was supposed to cut the celebratory cake but refused to spoil it!

**Local Celebrity
Paul Dunning
declared the
club open.**

Local dignitaries and officials of the Primary Care Trust together with the Directors of the Lindsay Leg Club Foundation, Ellie Lindsay and Mike Hoskins, attended.

There was a good turn out of members and a good time was had by all. Thanks must be given to Carol's daughters Katy and Zoey who were in charge of the catering on this day and provided us all with delicious refreshments





PRODUCED BY SALLY RENNIE

Christmas Lunch 2006

The Christmas Lunch took place on the 8th December 2006. Approximately sixty people enjoyed a Christmas menu prepared by Chef Mark Curry of Trusthorpe Springs, ably assisted by Zoey Frencham



Entertainment was provided by Pauline Smith who led and provided the musical accompaniment. Members enjoyed a Christmas sing-along. There have been requests for a repeat event for this year.



Pauline Smith entertained the audience.

